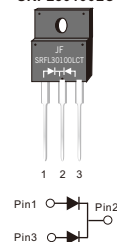


FEATURES

- Power pack
- Metal silicon junction ,majority carrier conduction
- Guard ring for overvoltage protection
- Low power loss ,high efficiency
- High current capability ,low forward voltage drop
- High forward surge capability
- High frequency operation
- Solder bath temperature 275℃ maximum, 10s, per JESD22-B106 (for ITO-220AB-L package)
- Component in accordance to RoHS 2015/863/EU



ITO-220AB-L
SRFL30100LCT



MECHANICAL DATA

- Case: ITO-220AB-L
- Molding compound meets UL94V-0 flammability rating
- Terminals: Lead solderable per J-STD-002 and JESD22-B102
- Polarity: As marked
- Mounting Torque: 10 in-lbs maximum

TYPICAL APPLICATIONS

For use in low voltage ,high frequency inverters ,DC/DC converters, free wheeling ,and polarity protection applications

MAXIMUM RATINGS

(Ratings at 25℃ ambient temperature unless otherwise specified)

Parameter	Symbol	Value	Unit
Maximum repetitive peak reverse voltage	V _{RRM}	100	V
Maximum average forward rectified current (see fig.1)	Per leg	15.0	A
	Total device	30.0	
Peak forward surge current 8.3ms single half sine-wave superimposed on rated load (JEDEC method at rated TL)	I _{FSM}	250	A
Peak repetitive reverse current per diode at tp=2 μs 1 KHz	I _{RRM}	0.5	A
Operating junction and Storage temperature range	T _J , T _{stg}	-55 to +150	℃
Isolation voltage (ITO-220AB only) from terminals to heatsink t=1 min	V _{AC}	1500	V

PRIMARY CHARACTERISTICS	
I _r (AV)	2×15A
V _{RRM}	100V
I _{rSM}	250A
V _f at I _r =5.0A,125℃ Per leg	0.45V
I _n	20 μ A
T _J (MAX)	150℃
Package	ITO-220AB-L
Diode variations	Common cathode

RATINGS AND CHARACTERISTIC OF SRFL30100LCT

ELECTRICAL CHARACTERISTICS (T_A=25°C Unless otherwise noted)

Parameter	Test Conditions		Symbol	TYP.	MAX.	Unit
Instantaneous forward voltage	Per leg I _F =15.0A	T _A =25°C	V _F ¹⁾	0.69	0.75	V
		T _A =100°C		0.67	—	
		T _A =125°C		0.64	—	
	Per leg I _F =5.0A	T _A =25°C		0.50	—	
		T _A =100°C		0.47	—	
		T _A =125°C		0.45	—	
Reverse current	V _R =100V	T _A =25°C	I _R ²⁾	20	50	μA
		T _A =100°C		2	5	mA
		T _A =125°C		8	20	
Typical junction capacitance	4V, 1MHz		C _J	750		pF

Notes: 1.Pulse test: 300 μs pulse width, 1% duty cycle

2.Pulse test: pulse width ≤ 40ms

THERMAL CHARACTERISTICS

Parameter	Symbol	SRFL30100LCT	Unit
Typical thermal resistance ³⁾	R _{θJC}	4.5	°C/W

3.Thermal resistance from junction to case

AVAILABLE PACK INFORMATION

Product code	Pack	Box Size L×W×H (mm)	Quantity (pcs/box)	Carton Size L×W×H (mm)	Quantity (box/carton)
SRFL30100LCT-T0-220AB-L	P/T	558×148×38	1000	565×225×170	5

RATINGS AND CHARACTERISTIC OF SRFL30100LCT

FIG.1-FORWARD CURRENT DERATING CURVE

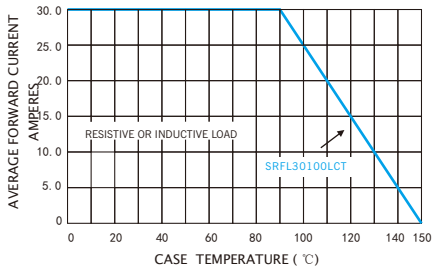


FIG.2-MAXIMUM NON-REPETITIVE PEAK FORWARD SURGE CURRENT

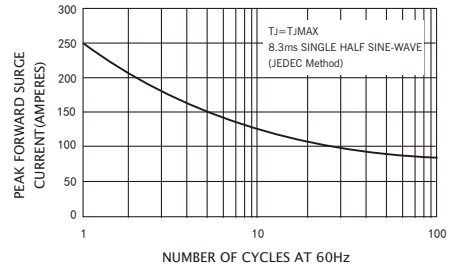


FIG.3-TYPICAL INSTANTANEOUS FORWARD CHARACTERISTICS

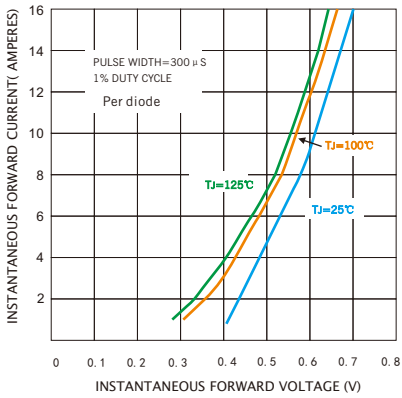


FIG.4-TYPICAL REVERSE CHARACTERISTICS

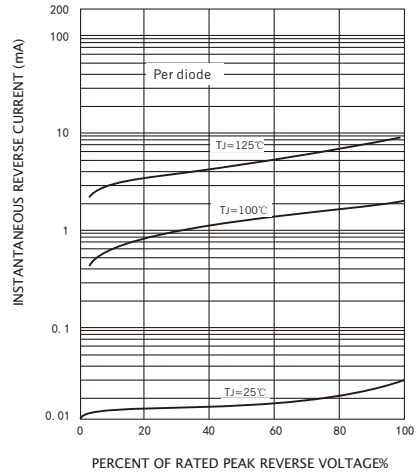
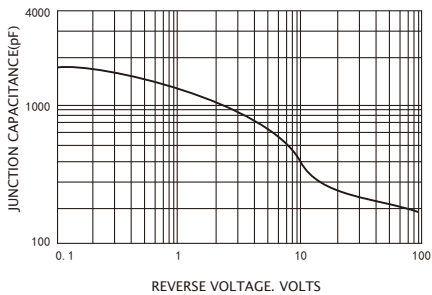
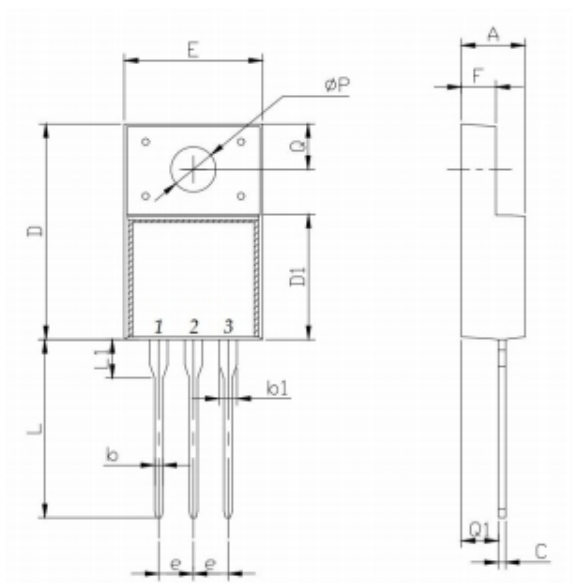


FIG.5-TYPICAL JUNCTION CAPACITANCE



PACKAGE OUTLINE DIMENSIONS

ITO-220AB-L



Symbol	Min	Typ	Max	Symbol	Min	Typ	Max
A	4.45	4.65	4.85	F	2.34	2.54	2.74
b	0.55	0.60	0.70	L	12.60	13.10	13.60
b1	1.15	1.20	1.30	L1	2.65	2.85	3.05
C	0.50	0.60	0.70	Q	3.20	3.35	3.50
D	15.50	16.00	16.50	Q1	3.60	2.75	3.90
D1	9.00	9.25	9.50	ϕP	3.00	3.20	3.40
e	2.54						
E	9.90	10.20	10.50				

Dimensions in millimeters

Friendship Reminder

- JiNan JingHeng hereinafter referred to as JH reserves the right to make changes to this document and its products and specifications at anytime without notice.
济南晶恒（以下简称JH）保留，未经通知变更本文件和与本文件相关的产品及规格的权利。
- Customers should obtain and confirm the latest product information and specifications before final design, purchase or use.
使用方应在使用、采购本产品之前获取并确认产品信息和规格书的最新版本。
- JH makes no warranty, representation or guarantee regarding the suitability of its products for any particular purpose, nor does JH assume any liability for application assistance or customer product design.
JH对其产品用于某特定用途的适用性，既不做任何保证、说明或担保、也不承担任何应用协助或使用方设计的法定责任。
- JH does not warrant or accept any liability with products which are purchased or used for any unintended or unauthorized application.
JH不保证或承担任何责任，其产品被采购使用于任何非预期或授权的应用。
- No license is granted by implication or otherwise under any intellectual property rights of JH.
此规格书属于JH的知识产权，没有经过我司授权不得抄袭。
- JH's products are not authorized for use as critical components in life support devices or systems without express written approval of JH.
没有JH的书面授权，JH的产品不能在生命支撑设备或系统里作为关键零件使用。