

General Description

This series of power MOSFET use N channel Multi-EPI Super-Junction technology and design to provide better characteristics, such as fast switchingtime, low Ciss and Crss, low on resistance and excellent avalanche characteristics,making it especially suitable for applications which require superior power density and outstanding efficiency.

Features

- Low on-resistance
- Ultra low gate charge and input capacitance
- 100% avalanche tested
- Rohs compliant

Mechanical Data

- Case:TO-220,ITO-220,TO-263 TO-251,TO-252Package

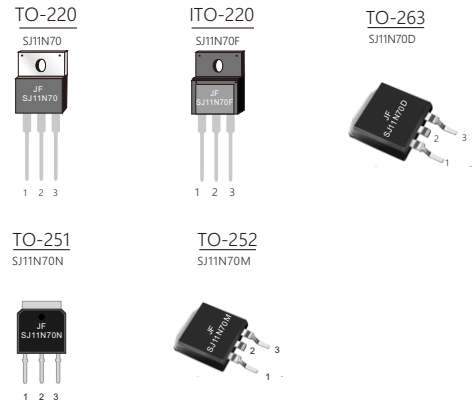
Application

- Switching applications

Ordering Information

Part No.	Package Type	Package	Quality(box)
SJ11N70	TO-220	Tube	1000
SJ11N70F	ITO-220	Tube	1000
SJ11N70D	TO-263	Tape & Reel	800
SJ11N70N	TO-251	Tube	1000
SJ11N70M	TO-252	Tape & Reel	2500

Product Summary		
V _{DS}	R _{DS(on)} (Ω) Max	I _D (A)
700V	0.45 @ 10V	11



Block Diagram

Pin Definition:

1. Gate
2. Drain
3. Source

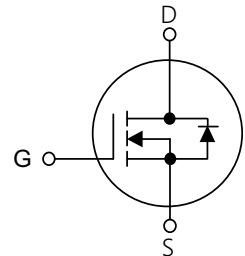


Table1 Absolute Maximum Ratings (T_c=25°C, unless otherwise specified)

Parameter	Symbol	TO-220/TO-263/TO-251/TO-252	ITO-220	Unit
Drain-Source Voltage	V _{DS}	700		V
Gate-Source Voltage	V _{GS}	±30		V
Continuous Drain Current	I _D	11		A
		9		
Power Dissipation T _c =25°C	P _D	151	50	W
Operating Junction and Storage Temperature	T _J /T _{STG}	-55 ~ +150		°C

Table 2. Thermal Characteristics

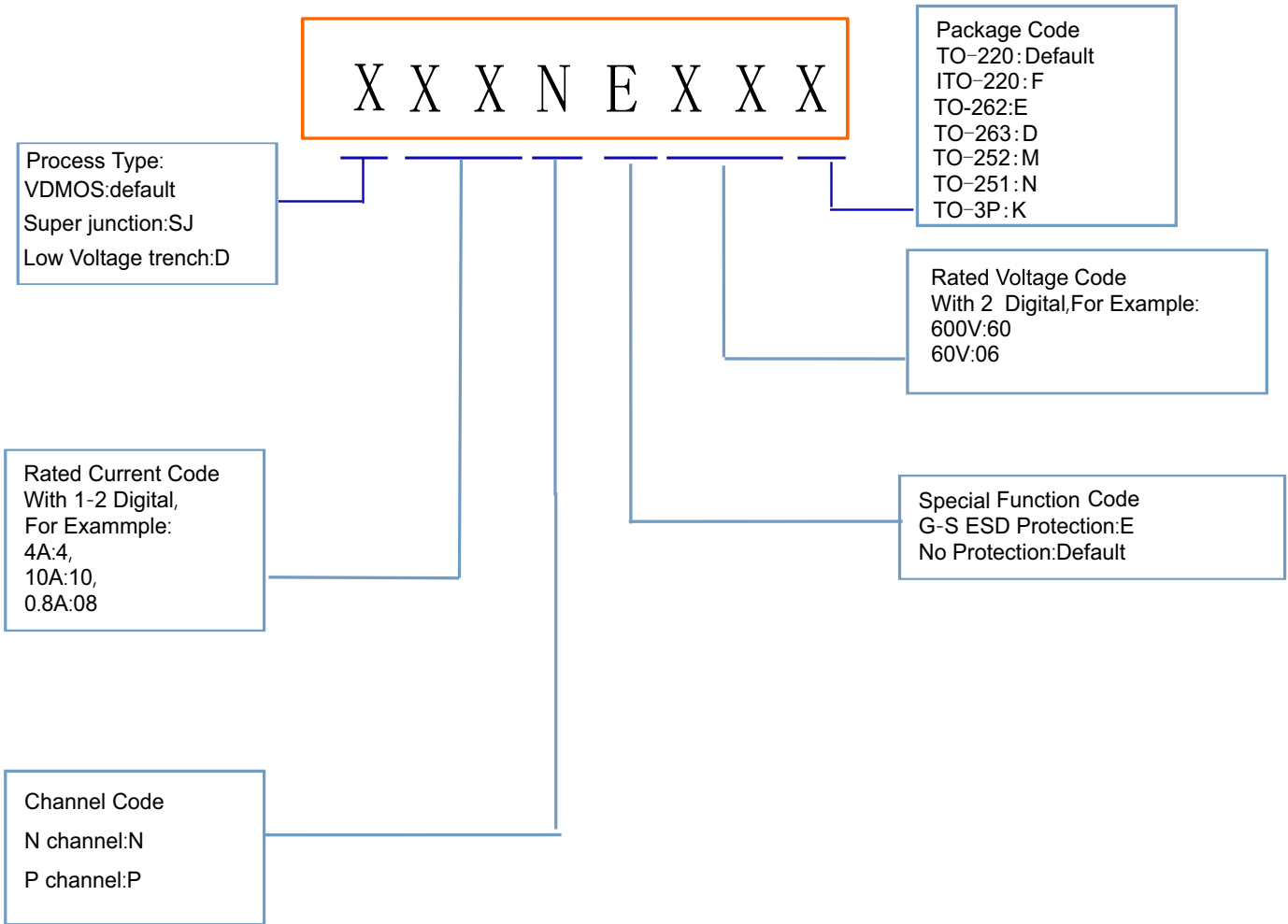
Parameter	Symbol	TO-220/TO-263 TO-251/TO-252	ITO-220	Unit
Thermal resistance Junction to Ambient	$R_{\theta JA}$	62	62	$^{\circ}\text{C}/\text{W}$
Thermal resistance Junction to Case	$R_{\theta JC}$	1.2	2.5	$^{\circ}\text{C}/\text{W}$

Table 3. Electrical Characteristics ($T_J=25^{\circ}\text{C}$, unless otherwise specified)

Parameter	Symbol	Test Conditions	Min	Typ	Max	Unit
Off Characteristics						
Drain-Source Breakdown Voltage	BV_{DSS}	$V_{GS}=0V, I_D=250\mu\text{A}$	700			V
Drain-Source Leakage Current	I_{DSS}	$V_{DS}=700V, V_{GS}=0V$			1	μA
Gate- Source Leakage Current	Forward	I_{GSS}			100	nA
	Reverse				-100	nA
On Characteristics(Note 1)						
Gate Threshold Voltage	$V_{GS(TH)}$	$V_{DS}=V_{GS}, I_D=250\mu\text{A}$	2.0		4.0	V
Static Drain-Source On-State Resistance	$R_{DS(ON)}$	$V_{GS}=10V, I_D=5.5A$			0.45	Ω
Drain-Source Diode Characteristics and Maximum Ratings						
Drain-Source Diode Forward Voltage	V_{SD}	$V_{GS}=0V, I_S=5.5A$			1.4	V
Maximum Continuous Drain-Source Diode Forward Current	I_S				11	A

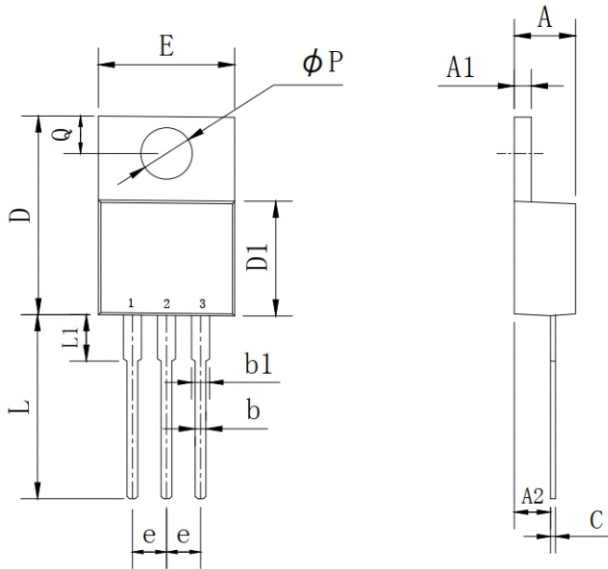
Notes : 1 Pulse Test: Pulse width $\leq 300\mu\text{S}$, Duty cycle $\leq 2\%$

Product Names Rules



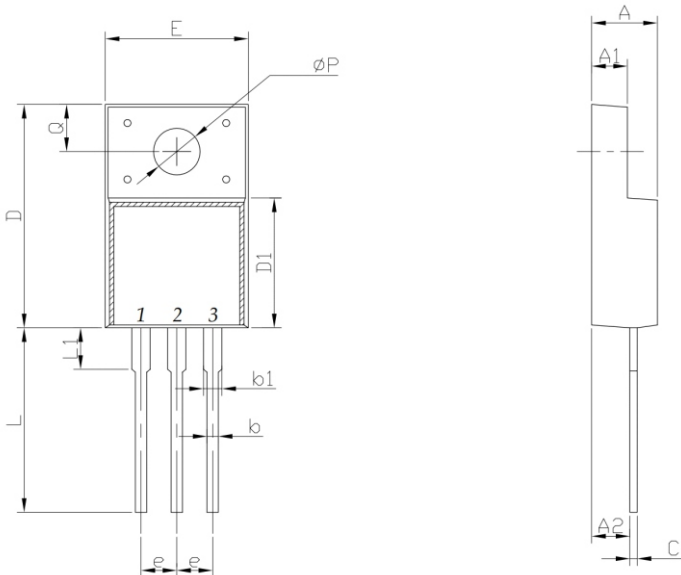
Dimensions

TO-220 PACKAGE OUTLINE DIMENSIONS



Symbol	Dimensions In Millimeters		Dimensions In Inches	
	MIN	MAX	MIN	MAX
A	4.25	4.87	0.167	0.192
A1	1.07	1.47	0.042	0.058
A2	2.03	2.92	0.080	0.115
b	0.51	1.11	0.020	0.044
b1	0.97	1.6	0.038	0.063
C	0.3	0.7	0.012	0.028
D	14.6	15.9	0.575	0.626
D1	8.04	9.3	0.317	0.366
E	9.57	10.57	0.377	0.416
e	2.34	2.74	0.092	0.108
L	12.58	14.3	0.495	0.563
L1	2.8	4.2	0.110	0.165
P	3.4	4.14	0.134	0.163
Q	2.45	3	0.096	0.118

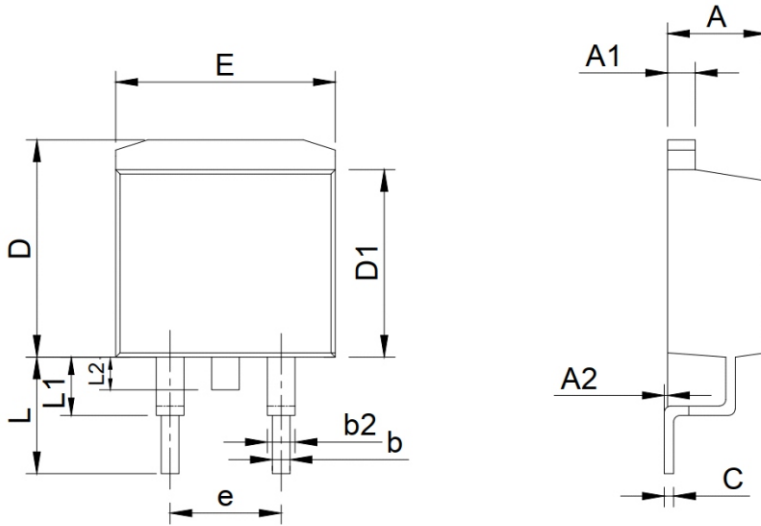
ITO-220 PACKAGE OUTLINE DIMENSIONS



Symbol	Dimensions In Millimeters		Dimensions In Inches	
	MIN	MAX	MIN	MAX
A	4.24	4.9	0.167	0.193
A1	2.3	2.92	0.091	0.115
A2	2.61	2.81	0.103	0.111
b	0.3	1	0.012	0.039
b1	0.9	1.55	0.035	0.061
C	0.3	0.7	0.012	0.028
D	14.5	16.36	0.571	0.644
D1	8.8	9.41	0.346	0.370
E	9.5	10.5	0.374	0.413
e	2.3	2.75	0.091	0.108
L	12.6	14	0.496	0.551
L1	2.45	4.3	0.096	0.169
P	2.9	3.8	0.114	0.150
Q	2.5	3.55	0.098	0.140

Dimensions

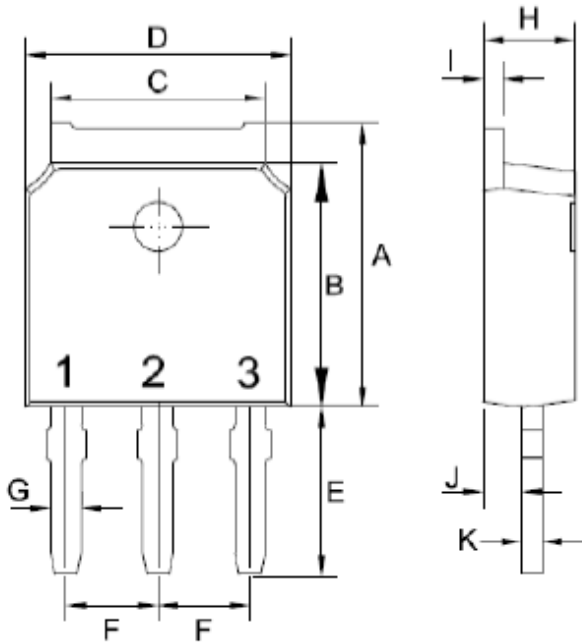
TO-263 PACKAGE OUTLINE DIMENSIONS



Symbol	Dimensions In Millimeters		Dimensions In Inches	
	MIN	MAX	MIN	MAX
A	4.25	4.87	0.167	0.192
A1	1.07	1.47	0.042	0.058
A2	0	0.25	0.000	0.010
b	0.61	1.01	0.024	0.040
b1	1.2	1.34	0.047	0.053
C	0.3	0.6	0.012	0.024
D	9.48	10.84	0.373	0.427
D1	8.49	9.3	0.334	0.366
E	9.7	10.31	0.382	0.406
e	4.88	5.28	0.192	0.208
L	4.46	5.85	0.176	0.230
L1	1.33	2.33	0.052	0.092
L2	0	2.2	0.000	0.087

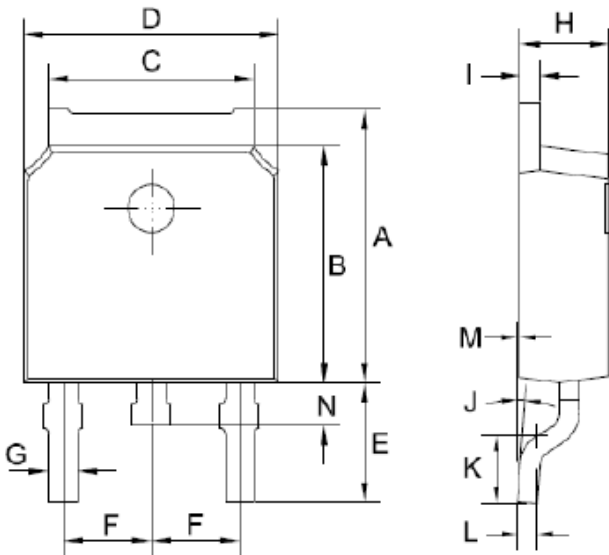
Dimensions

TO-251 PACKAGE OUTLINE DIMENSIONS



Symbol	Dimensions In Millimeters		Dimensions In Inches	
	MIN	MAX	MIN	MAX
A	6.85	7.25	0.270	0.285
B	5.8	6.3	0.228	0.248
C	5	5.53	0.197	0.218
D	6.3	6.8	0.248	0.268
E	3.5	4.35	0.138	0.171
F	2.19	2.39	0.086	0.094
G	0.45	0.85	0.018	0.033
H	2.2	2.4	0.087	0.094
I	0.41	0.61	0.016	0.024
J	0.71	1.31	0.028	0.052
K	0.41	0.61	0.016	0.024

TO-252 PACKAGE OUTLINE DIMENSIONS



Symbol	Dimensions In Millimeters		Dimensions In Inches	
	MIN	MAX	MIN	MAX
A	6.85	7.25	0.270	0.285
B	5.8	6.3	0.228	0.248
C	5	5.53	0.197	0.218
D	6.3	6.8	0.248	0.268
E	2.6	3.3	0.102	0.130
F	2.19	2.39	0.086	0.094
G	0.45	0.85	0.018	0.033
H	2.2	2.4	0.087	0.094
I	0.41	0.61	0.016	0.024
J	0°	8°	0°	8°
K	1.45	1.85	0.057	0.073
L	0.41	0.61	0.016	0.024
M	0	0.12	0.000	0.005
P	0.6	1	0.024	0.039

Friendship Reminder

■ JiNan JingHeng (hereinafter referred to as JH) reserves the right to make changes to this document and its products and specifications at anytime without notice.

■ Customers should obtain and confirm the latest product information and specifications before final design, purchase or use.

■ JH makes no warranty, representation or guarantee regarding the suitability of its products for any particular purpose, nor does JH assume any liability for application assistance or customer product design.

■ JH does not warrant or accept any liability with products which are purchased or used for any unintended or unauthorized application.

■ No license is granted by implication or otherwise under any intellectual property rights of JH.

■ JH is products are not authorized for use as critical components in life support devices or systems without express written approval of JH.