

FEATURES

- Fred Chip Planar Construction
- SuperFast Switching,High Efficiency
- Low Power loss, High Efficiency
- Low Reverse Leakage Current
- High Surge Current Capability
- Plastic Material has UL Flammability Classification 94V-0

MECHANICAL DATA

- Case: JEDEC TO-247AB molded plastic body
- Terminals: Lead solderable per MIL-STD-750.method 2026
- Polarity: As marked
- Mounting Position: Any
- weight: 6.3g(Approx.)

TYPICAL APPLICATIONS

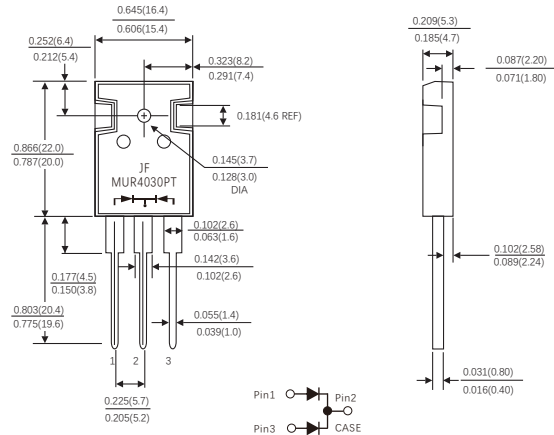
- For use in boost stage in SMPS
- High frequency inverters for solar inverters
- DC/DC converters
- High frequency output rectification of battery chargers
- Free wheeling diodes in motor drivers

Maximum Ratings and Electrical Characteristics

(Ratings at 25°C ambient temperature unless otherwise specified
Single Phase, half wave, 60Hz, resistive or inductive load. For capacitive load, derate current by 20%.)

Parameters	Symbol	MUR4030PT		Unit
Maximum Recurrent Peak Reverse Voltage	V_{RRM}	300		V
Maximum RMS Voltage	V_{RMS}	210		V
Maximum DC Blocking Voltage	V_{DC}	300		V
Maximum Average Forward (See Figure 1)	$I_{F(AV)}$	20 40	A	
Peak Forward Surge Current : 8.3ms single half sine -wave superimposed on rated load(JEDEC method),Per leg	I_{FSM}	200		A
Maximum Forward Voltage at 20A per leg	V_F	Typ.	Max.	V
		1.05	1.30	
Maximum Reverse Recovery Time (Measured With $I_F=0.5A$, $I_R=1.0A$, $IRR=0.25A$)	T_{rr}	Typ.	Max.	nS
		30	50	
Maximum DC Reverse Current at Rated DC Blocking Voltag	I_R	5 250	uA	
Typical Thermal Resistance Junction to case	$R_{\theta JC}$	0.50		°C/W
Typical Thermal Resistance Junction to Ambient	$R_{\theta JA}$	45		°C/W
Operating Junction and Storage Temperature Range	T_J, T_{STG}	-55 to +150		°C

TO-247AB



Dimensions in inches and (millimeters)

Fig-1 FORWARD CURRENT DERATING CURVE

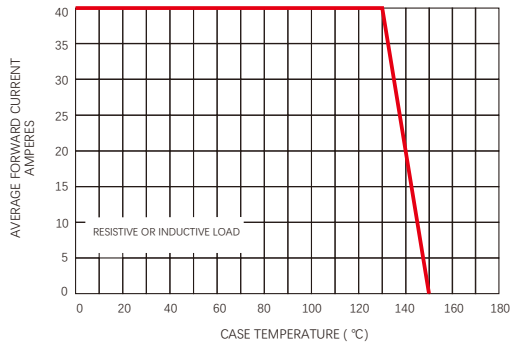


Fig.2-TYPICAL INSTANTANEOUS FORWARD CHARACTERISTICS

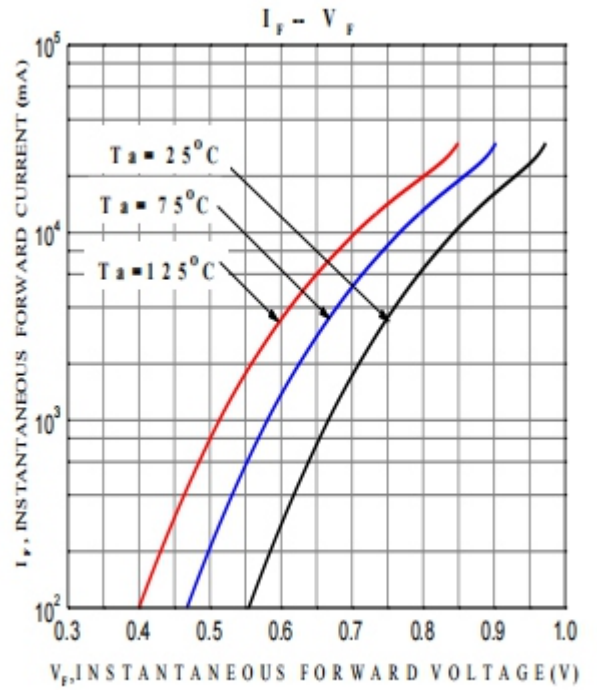


FIG.4-TYPICAL REVERSE CHARACTERISTICS

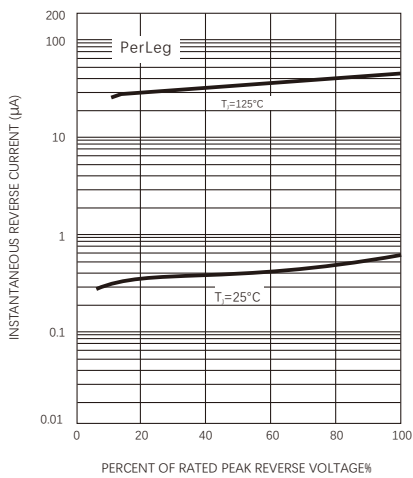
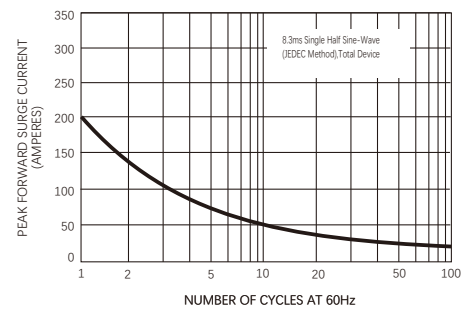


FIG.2-MAXIMUM NON-REPETITIVE PEAK FORWARD SURGE CURRENT



Friendship Reminder

- JiNan JingHeng (hereinafter referred to as JH) reserves the right to make changes to this document and its products and specifications at anytime without notice.
- Customers should obtain and confirm the latest product information and specifications before final design, purchase or use.
- JH makes no warranty, representation or guarantee regarding the suitability of its products for any particular purpose, nor does JH assume any liability for application assistance or customer product design.
- JH does not warrant or accept any liability with products which are purchased or used for any unintended or unauthorized application.
- No license is granted by implication or otherwise under any intellectual property rights of JH.
- JH's products are not authorized for use as critical components in life support devices or systems without express written approval of JH.