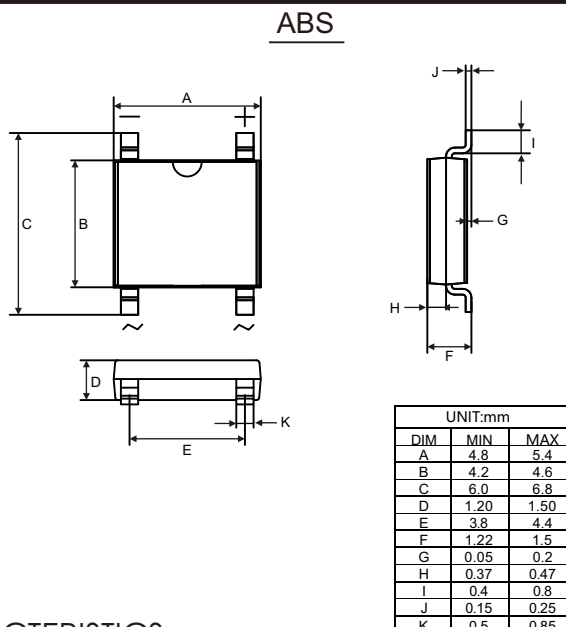


### FEATURES

- Plastic package has Underwriters Laboratory Flammability Classification 94V-0
- Glass passivated chip junction
- Rating to 1000V PRV
- Ideal for printed circuit board
- High temperature soldering guaranteed:260C/10 seconds at terminals
- Component in accordance to RoHS 2011/65/EU

### MECHANICAL DATA

- Case: ABS molded plastic body
- Terminals: Plated leads solderable per MIL-STD-750,method 2026
- Mounting Position: Any



### MAXIMUM RATINGS AND ELECTRICAL CHARACTERISTICS

(Rating at 25°C ambient temperature unless otherwise specified. Single phase ,half wave ,60Hz,resistive or inductive load. For capacitive load,derate current by 20%.)

		Symbols	ABS1	ABS2	ABS4	ABS6	ABS8	ABS10	Units
Maximum Recurrent Peak Reverse Voltage		V <sub>RRM</sub>	100	200	400	600	800	1000	Volts
Maximum RMS Voltage		V <sub>RMS</sub>	70	140	280	420	560	700	Volts
Maximum DC Blocking Voltage		V <sub>DC</sub>	100	200	400	600	800	1000	Volts
Maximum Average Forward Rectified Current		I <sub>(AV)</sub>	1.0						Amp
Peak Forward Surge Current 8.3ms single half sine-wave superimposed on rated load (JEDEC method)		I <sub>FSM</sub>	35						Amps
Maximum Instantaneous Forward Voltage at I <sub>F</sub> =	0.5 A	V <sub>F</sub>	0.95						Volts
	1.0 A		1.10						
Rating for fusing (t≤8.3ms)		I <sup>2</sup> t	5						A <sup>2</sup> s
Maximum DC Reverse Current at rated DC blocking voltage	T <sub>A</sub> =25°C	I <sub>R</sub>	5						μA
	T <sub>A</sub> =125°C		500						
Typical junction capacitance(Note1)		C <sub>J</sub>	25						PF
Typical thermal resistance(Note 2)		R <sub>θJA</sub> R <sub>θJC</sub>	62 25						°C/W
Operating junction and storage temperature range		T <sub>J</sub> T <sub>STG</sub>	-55 to +150						°C

**Note:** 1. Measured at 1MHZ and applied reverse voltage of 4.0 Volts.

2. Thermal resistance junction to ambient, on FR-4 P. C. B Board

# RATINGS AND CHARACTERISTIC CURVES ABS1 THRU ABS10

FIG.1-TYPICAL FORWARD CURRENT DERATING CURVE

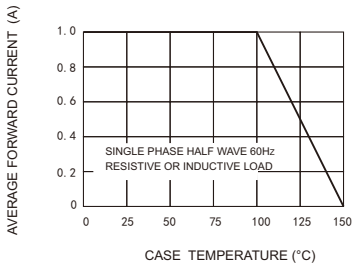


FIG.2-MAXIMUM NON-REPETITIVE FORWARD SURGE CURRENT

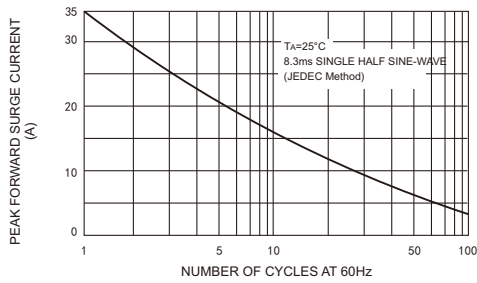


FIG3-TYPICAL JUNCTION CAPACITANCE

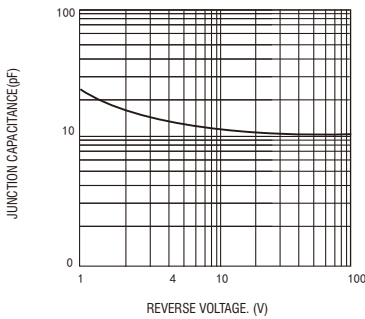


FIG4-TYPICAL FORWARD CHARACTERISTICS

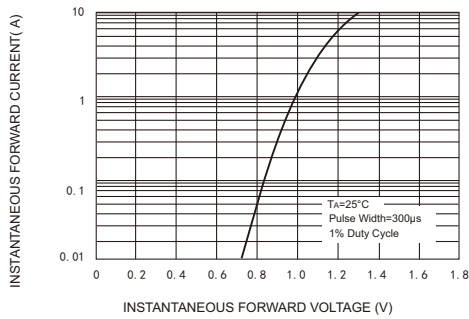
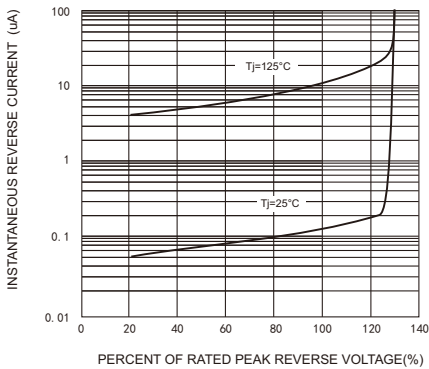
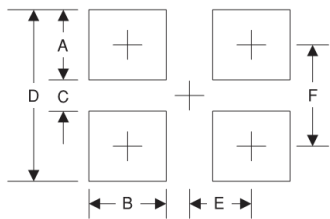


FIG.5-TYPICAL REVERSE CHARACTERISTICS



SUGGESTED PAD LAYOUT



Symbol	Unit (mm)	Unit (inch)
A	1. 5	0. 059
B	0. 9	0. 035
C	4. 22	0. 166
D	7. 22	0. 284
E	2. 05	0. 081
F	5. 72	0. 225