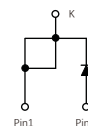


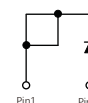
FEATURES

- Power pack
- Metal silicon junction ,majority carrier conduction
- Guard ring for overvoltage protection
- Low power loss ,high efficiency
- High current capability ,low forward voltage drop
- High forward surge capability
- High frequency operation
- Solder bath temperature 275°C maximum, 10s, per JESD22-B106 (for TO-220AB and ITO-220AB package)
- Component in accordance to RoHS 2015/863/EU

TO-220AC



ITO-220AC



MECHANICAL DATA

- Case: JEDEC TO-220AC ITO-220AC molded plastic body
- Terminals: Lead solderable per MIL-STD-750,method 2026
- Polarity: As marked
- Mounting Position: Any

TYPICAL APPLICATIONS

For use in low voltage ,high frequency inverters ,DC/DC converters,free wheeling ,and polarity protection applications

MAXIMUM RATINGS AND ELECTRICAL CHARACTERISTICS

(Ratings at 25°C ambient temperature unless otherwise specified)

Parameters		Symbols	Value				Units
Maximum repetitive peak reverse voltage		V_{RRM}	150				V
Maximum RMS voltage		V_{RMS}	106				V
Maximum DC blocking voltage		V_{DC}	150				V
Maximum average forward rectified current(see Fig.1)		$I_{F(AV)}$	30.0				A
Peak forward surge current 8.3ms single half sine-wave superimposed on rated load (JEDEC method)		I_{FSM}	300				A
Forward voltage at 30A (Note 1)		V_F	Typ.	0.82	Max.	0.90	V
Maximum instantaneous reverse current at rated DC blocking voltage(Note 1)	$T_J=25^{\circ}C$	I_R	Typ.	-	Max.	10	uA
	$T_J=125^{\circ}C$		Typ.	-	Max .	5.0	mA
Typical thermal resistance (Note 2)		$R_{\theta JC}$	TO-220AC:1.0 ITO-220AC:4.0				°C/W
Operating junction temperature range		T_J	-55 To+150				°C
Storage temperature range		T_{STG}	-55 To+150				°C

Notes: 1.Pulse test: 300 us pulse width,1% duty cycle
2.Thermal resistance from junction to case

FIG.1-FORWARD CURRENT DERATING CURVE

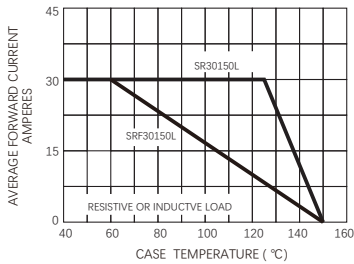


FIG.2-MAXIMUM NON-REPETITIVE PEAK FORWARD SURGE CURRENT

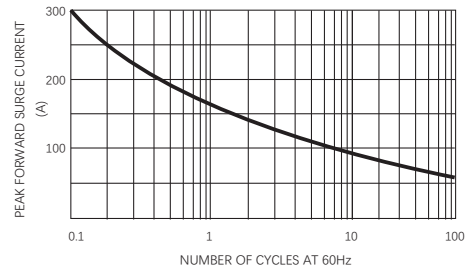


FIG.3-TYPICAL INSTANTANEOUS FORWARD CHARACTERISTICS

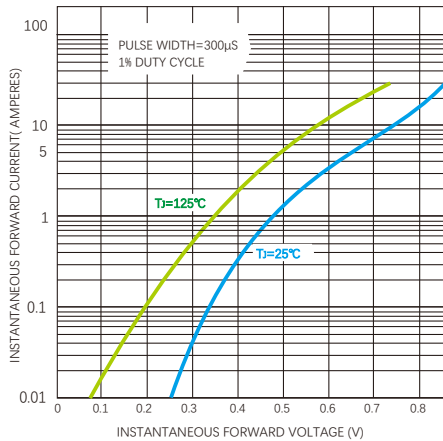
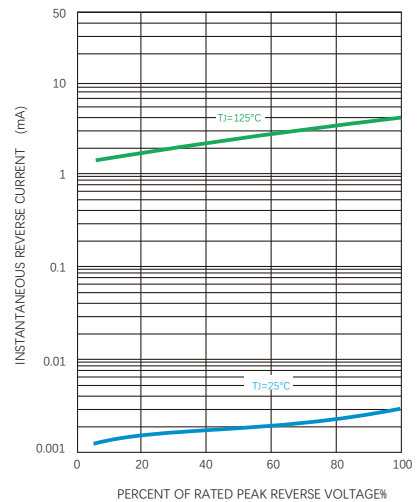
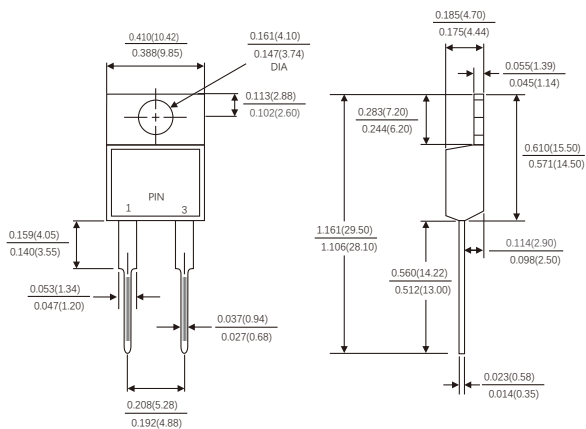


FIG.4-TYPICAL REVERSE CHARACTERISTICS

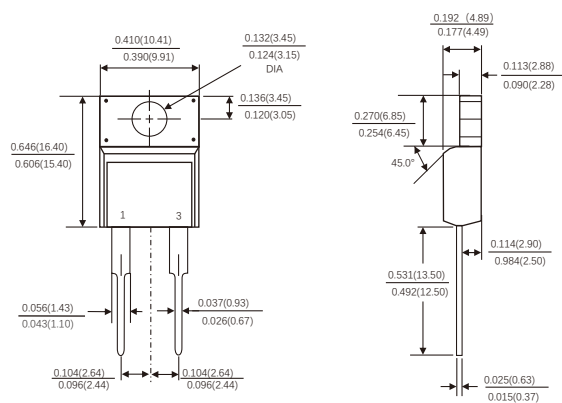


Dimensions in inches and (millimeters)

TO-220AC



ITO-220AC



Friendship Reminder

- JiNan JingHeng (hereinafter referred to as JH) reserves the right to make changes to this document and its products and specifications at anytime without notice.
- Customers should obtain and confirm the latest product information and specifications before final design, purchase or use.
- JH makes no warranty, representation or guarantee regarding the suitability of its products for any particular purpose, nor does JH assume any liability for application assistance or customer product design.
- JH does not warrant or accept any liability with products which are purchased or used for any unintended or unauthorized application.
- No license is granted by implication or otherwise under any intellectual property rights of JH.
- JH's products are not authorized for use as critical components in life support devices or systems without express written approval of JH.