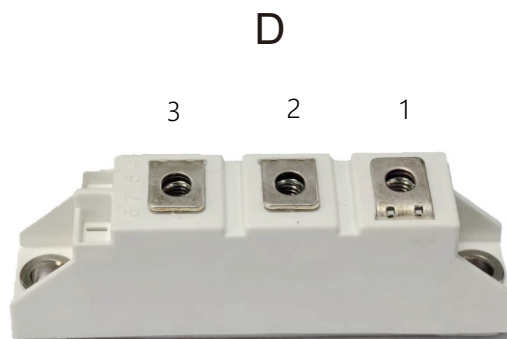


FEATURES

- High Surge Capability
- Electrically Isolation Base Plate
- Isolation Type Package
- Component in accordance to RoHS 2015/863/EU



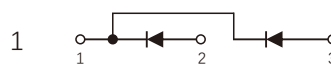
MECHANICAL DATA

- Case: D
- Molding compound meets UL94V-0 flammability rating
- Polarity: As marked

TYPICAL APPLICATIONS

- Power Supplies
- AC&DC Motor Drivers
- Plating Power Supply
- Welders
- Battery Supplier

Circuit



ABSOLUTE MAXIMUM RATINGS

Parameters	Symbol	Test conditions	Value	Unit
Maximum repetitive peak reverse voltage	V_{RRM}		1600	V
Maximum Continuous forward current, per diode	I_F	$T_c=140^{\circ}\text{C}$	100	A
Single pulse forward current, per diode	I_{FSM}	8.3ms , half sine	2000	A
RMS isolation voltage	V_{iso}	AC,,t=1min	2500	V
Maximum junction temperature	T_J		175	$^{\circ}\text{C}$
Storage temperture	T_{stg}		-55 ~ 150	$^{\circ}\text{C}$
Power DissipationPower Dissipation	P_D		333	W
Thermal ResistanceThermal Resistance	$R_{\theta c}$	Junction-to-Case	0.45	$^{\circ}\text{C}/\text{W}$

ELECTRICAL CHARACTERISTICS

Parameters	Symbol	Test conditions	Min	Typ	Max	Units
Cathode to anode break down voltage	VBR	$I_R=100\mu A$	1600	-	-	V
Forward voltage	VF	$I_F=100A$ $T_J=25^{\circ}C$		1.10	1.30	
		$I_F=100A$ $T_J=125^{\circ}C$		-	1.10	
Reverse leakage current	IR	$V_R=1600V$ $T_J=25^{\circ}C$		-	10	μA
		$V_R=1600V$ $T_J=125^{\circ}C$		-	500	μA

FIG.1-TYPICAL FORWARD CURRENT DERATING CURVE

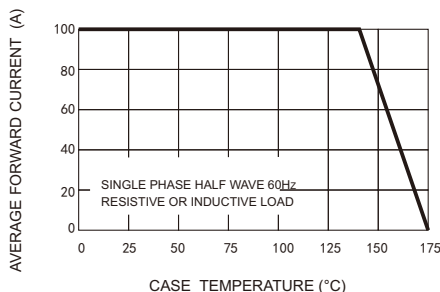


FIG.2-MAXIMUM NON-REPETITIVE FORWARD SURGE CURRENT

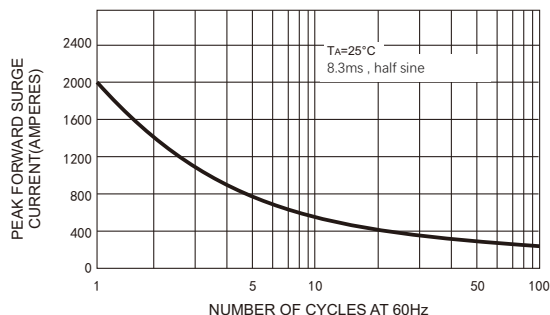


FIG4-TYPICAL FORWARD CHARACTERISTICS

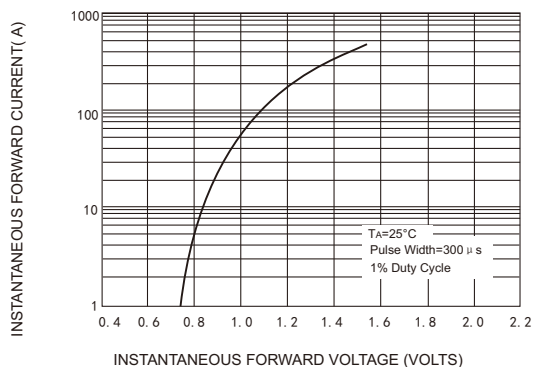
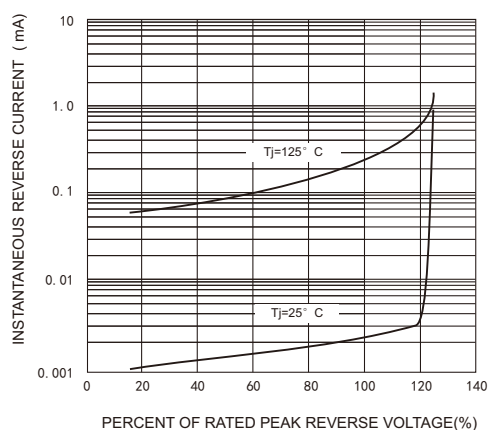
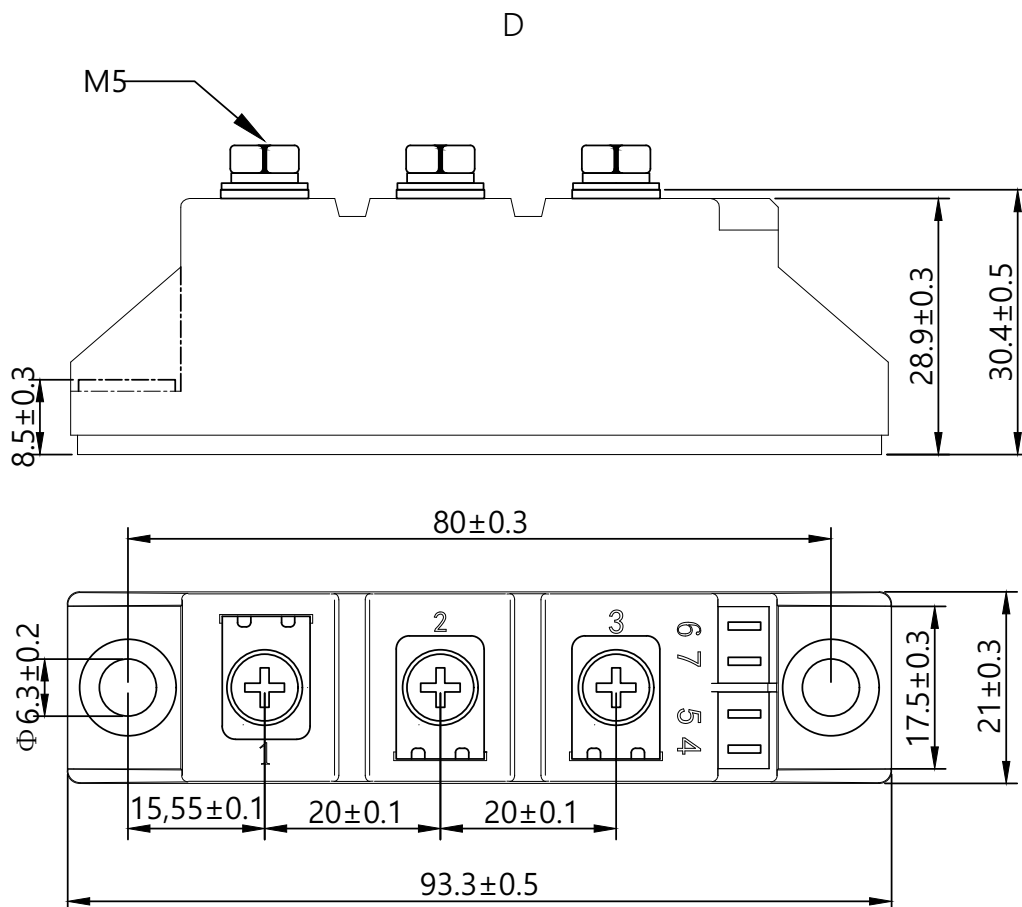


FIG.5-TYPICAL REVERSE CHARACTERISTICS



Package Outline Information



Ordering Information Tabel

J	D1M	100	-	160
①	②	③	④	

- ① JH' s power module
- ② Circuit configuration, M-High Power Products Diode Modules, Circuit-1
- ③ Maximum average forward current , 100A
- ④ Voltage code 1600V

Friendship Reminder

■ JiNan JingHeng (hereinafter referred to as JH) reserves the right to make changes to this document and its products and specifications at anytime without notice.

■ Customers should obtain and confirm the latest product information and specifications before final design, purchase or use.

■ JH makes no warranty, representation or guarantee regarding the suitability of its products for any particular purpose, nor does JH assume any liability for application assistance or customer product design.

■ JH does not warrant or accept any liability with products which are purchased or used for any unintended or unauthorized application.

■ No license is granted by implication or otherwise under any intellectual property rights of JH.

■ JH's products are not authorized for use as critical components in life support devices or systems without express written approval of JH.