

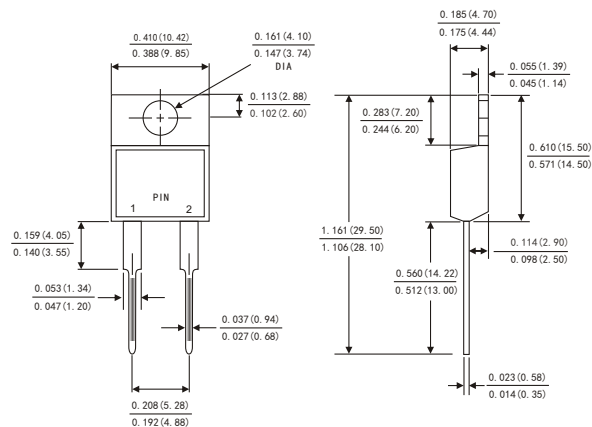
### FEATURES

- Plastic package has Underwriters Laboratory Flammability Classification 94V-0
- Fast switching for high efficiency
- Low forward voltage drop
- Ultrafast Recovery Time
- High surge current capability
- For use in free wheeling,snubber,clamp,inversion welder, PFC,Plating Power Supply
- High temperature soldering guaranteed:260°C/10 seconds, 0.25"(6.35mm)from case
- Component in accordance to RoHS 2015/863/EU

### MECHANICAL DATA

- Case: JEDEC TO-220AC molded plastic body
- Terminals: Lead solderable per MIL-STD-750,method 2026
- Polarity: As marked
- Mounting Position: Any

### TO-220AC



### MAXIMUM RATINGS

(Ratings at 25°C ambient temperature unless otherwise specified )

Parameter	Symbol	Value	Unit
Maximum repetitive peak reverse voltage	$V_{RRM}$	1500	V
Maximum average forward rectified current (see fig.1)	$I_{F(AV)}$	30.0	A
Surge non repetitive forward current $t_p=10ms$ sinusoidal	$I_{FSM}$	250	A
Maximum operating junction temperature	$T_J$	175	°C
Storage temperature range	$T_{stg}$	-55 to +175	°C

## ELECTRICAL CHARACTERISTICS (T<sub>A</sub>=25°C Unless otherwise noted)

Parameter	Test Conditions		Symbol	Typ.	Max.	Unit
Instantaneous forward voltage	I <sub>F</sub> =30.0A	T <sub>J</sub> =25°C	V <sub>F</sub> <sup>1)</sup>	2.0	2.5	V
		T <sub>J</sub> =125°C		1.75	-	
Reverse current	V <sub>R</sub> =1500V	T <sub>J</sub> =25°C	I <sub>R</sub> <sup>2)</sup>	-	5.0	μA
		T <sub>J</sub> =125°C		-	250	

Notes: 1.Pulse test: 300 μs pulse width,1% duty cycle  
2.Pulse test: pulse width ≤40ms

## DYNAMIC RECOVERY CHARACTERISTICS (T<sub>J</sub>=25°C)

Parameters	Test Conditions	Symbol	Min.	Typ.	Max.	Units
Reverse recovery time	I <sub>F</sub> =0.5A, I <sub>R</sub> =1A, I <sub>RR</sub> =0.25A	trr	-	75	90	ns

## THERMAL CHARACTERISTICS

Parameter	Symbol	MURS30150	Unit
Typical thermal resistance <sup>3)</sup>	R <sub>θJC</sub>	0.8	°C/W

3.Thermal resistance from junction to case

FIG.1-FORWARD CURRENT DERATING CURVE

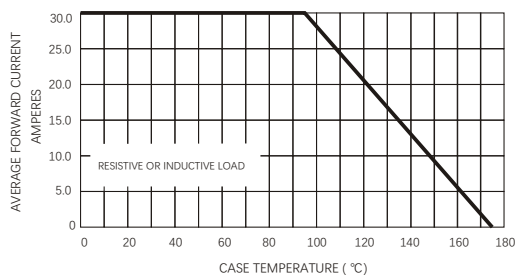


FIG.2-MAXIMUM NON-REPETITIVE PEAK FORWARD SURGE CURRENT

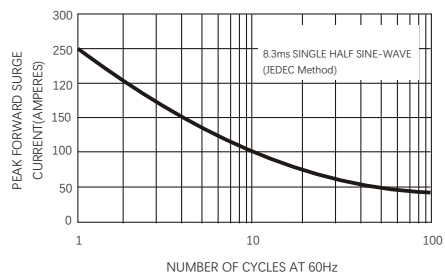


FIG.3-TYPICAL INSTANTANEOUS FORWARD CHARACTERISTICS

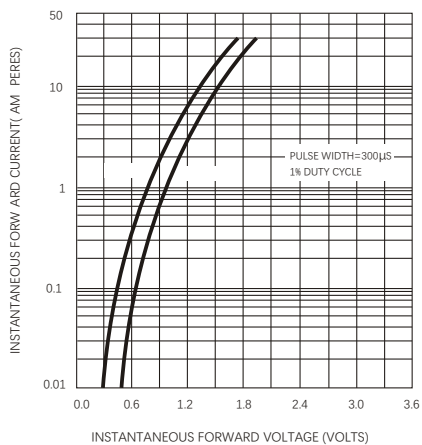
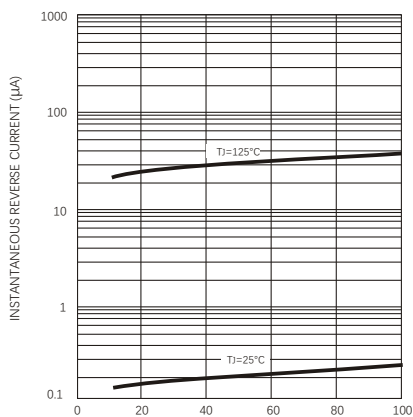


FIG.4-TYPICAL REVERSE CHARACTERISTICS



## Friendship Reminder

- JiNan JingHeng (hereinafter referred to as JH) reserves the right to make changes to this document and its products and specifications at anytime without notice.
- Customers should obtain and confirm the latest product information and specifications before final design, purchase or use.
- JH makes no warranty, representation or guarantee regarding the suitability of its products for any particular purpose, nor does JH assume any liability for application assistance or customer product design.
- JH does not warrant or accept any liability with products which are purchased or used for any unintended or unauthorized application.
- No license is granted by implication or otherwise under any intellectual property rights of JH.
- JH's products are not authorized for use as critical components in life support devices or systems without express written approval of JH.