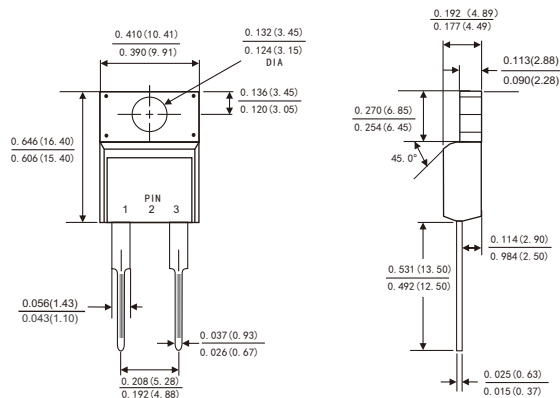


## FEATURES

- Plastic package has Underwriters Laboratory Flammability Classification 94V-0
- Metal silicon junction ,majority carrier conduction
- Guard ring for overvoltage protection
- Low power loss ,high efficiency
- High current capability ,Low forward voltage drop
- Single rectifier construction
- High surge capability
- For use in low voltage ,high frequency inverters, free wheeling ,and polarity protection applications
- High temperature soldering guaranteed:260°C/10 seconds, 0.25"(6.35mm)from case
- Component in accordance to RoHS 2011/65/EU



## ITO-220AC



Dimensions in inches and (millimeters)

## MECHANICAL DATA

- Case: JEDEC ITO-220AC molded plastic body
- Terminals: Lead solderable per MIL-STD-750,method 2026
- Polarity: As marked
- Mounting Position: Any

## MAXIMUM RATINGS AND ELECTRICAL CHARACTERISTICS

(Ratings at 25°C ambient temperature unless otherwise specified ,Single phase ,half wave ,resistive or inductive load. For capacitive load,derate by 20%.)

		Symbols	SRF 520	SRF 530	SRF 540	SRF 560	SRF 5100	SRF 5150	SRF 5200	Units
Maximum repetitive peak reverse voltage		V <sub>RRM</sub>	20	30	40	60	100	150	200	Volts
Maximum RMS voltage		V <sub>RMS</sub>	14	21	28	42	71	105	140	Volts
Maximum DC blocking voltage		V <sub>DC</sub>	20	30	40	60	100	150	200	Volts
Maximum average forward rectified current (see fig.1)		I(AV)	5.0							Amps
Peak forward surge current 8.3ms single half sine-wave superimposed on rated load (JEDEC method )		I <sub>FSM</sub>	150.0							Amps
Maximum instantaneous forward voltage at 5.0 A(Note 1 )		V <sub>F</sub>	0.60			0.70	0.85	0.90	0.95	Volts
Maximum instantaneous reverse current at rated DC blocking voltage(Note 1)	T <sub>A</sub> =25°C	I <sub>R</sub>	100				20			μ A
	T <sub>A</sub> =100°C		5				-			mA
	T <sub>A</sub> =125°C		-				3			
Typical junction capacitance(Note 2)		C <sub>J</sub>	500				400			pF
Typical thermal resistance		R <sub>θJC</sub>	2.5							°C/W
Operating junction temperature range		T <sub>J</sub>	-55 to+150							°C
Storage temperature range		T <sub>STG</sub>	-55 to+150							°C

**Notes:** 1.Pulse test: 300  $\mu s$  pulse width,1% duty cycle

2.Measured at 1MHz and reverse voltage of 4.0volts

# RATINGS AND CHARACTERISTIC CURVES SRF520 THRU SRF5200

FIG.1-FORWARD CURRENT DERATING CURVE

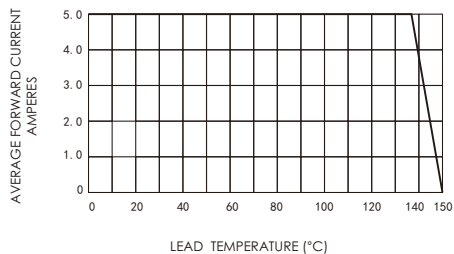


FIG.2-MAXIMUM NON-REPETITIVE PEAK FORWARD SURGE CURRENT

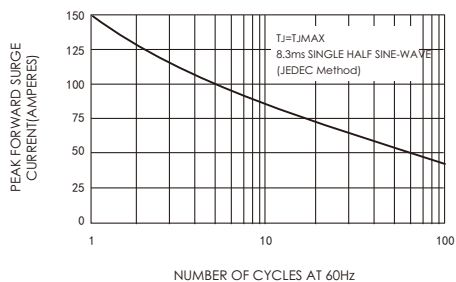


FIG.3-TYPICAL INSTANTANEOUS FORWARD CHARACTERISTICS

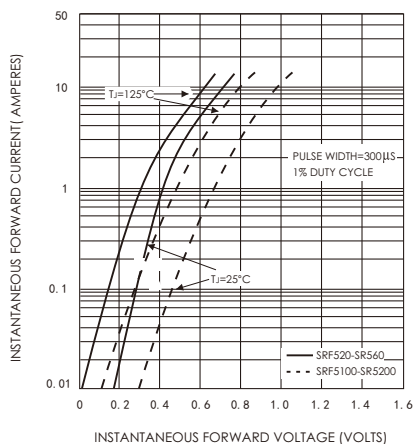


FIG.4-TYPICAL REVERSE CHARACTERISTICS

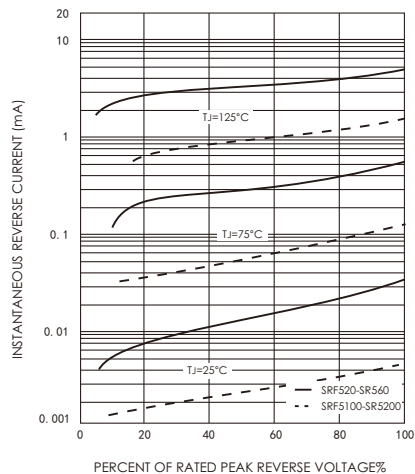


FIG.5-TYPICAL JUNCTION CAPACITANCE

