

## FEATURES

- Power pack
- Metal silicon junction ,majority carrier conduction
- Guard ring for overvoltage protection
- Low power loss ,high efficiency
- High current capability ,low forward voltage drop
- High forward surge capability
- High frequency operation
- Meets MSL Level 1 , per J-STD-020,LF MAX peak of 245°C ( for TO-263 package )
- Solder bath temperature 275°C maximum , 10s , per JESD22-B106 ( for TO-220AB and ITO-220AB package )
- Component in accordance to RoHS 2011/65/EU
- AEC-Q101 qualified and PPAP capable



AEC-Q101 Qualified

## MECHANICAL DATA

- Case: JEDEC TO-220AB、 ITO-220AB、 TO-263
- Molding compound meets UL94V-0 flammability rating
- Terminals: Lead solderable per J-STD-002 and JESD22-B102
- Polarity: As marked
- Mounting Torque: 10 in-lbs maximum

## TYPICAL APPLICATIONS

For use in low voltage ,high frequency inverters ,DC/DC converters,free wheeling ,and polarity protection applications

## MAXIMUM RATINGS

(Ratings at 25°C ambient temperature unless otherwise specified )

PRIMARY CHARACTERISTICS	
$I_F(AV)$	2×15A
$V_{RRM}$	100V
$I_{FSM}$	250A
VF at $I_F=15.0A$ ,Per leg	0.75V
$I_R$	2μA
$T_J(MAX)$	150°C
Package	TO-220AB, ITO-220AB, TO-263
Diode variations	Common cathode

Parameter		Symbol	Value	Unit
Maximum repetitive peak reverse voltage		$V_{RRM}$	100	V
Maximum average forward rectified current (see fig.1)	Per leg	$I_F(AV)$	15.0	A
	Total device		30.0	
Peak forward surge current 8.3ms single half sine-wave superimposed on rated load (JEDEC method at rated TL)		$I_{FSM}$	250	A
Peak repetitive reverse current per diode at $t_p=2\mu s$ 1KHz		$I_{RRM}$	0.5	A
Operating junction and Storage temperature range		$T_J, T_{stg}$	-55 to +150	°C
Isolation voltage(ITO-220AB only)from terminals to heatsink $t=1$ min		$V_{AC}$	1500	V

SR30100CT-V,SRF30100CT-V,SR30100D1-V

ELECTRICAL CHARACTERISTCS ( TA=25°C Unless otherwise noted)

Parameter	Test Conditions		Symbol	TYP.	MAX.	Unit
Instaneous forward voltage	Per leg IF=15.0A	TA=25°C	VF 1)	0.75	0.85	V
		TA=100°C		0.65	-	
		TA=125°C		0.61	-	
	Per leg IF=10.0A	TA=25°C		0.71	0.81	
		TA=100°C		0.61	-	
		TA=125°C		0.57	-	
Reverse current	VR=100V	TA=25°C	IR 2)	2	5	µA
		TA=100°C		-	2	mA
		TA=125°C		-	5	
Typical junction capacitance	4V,1MHz		CJ	367		pF

Notes: 1.Pulse test: 300 µs pulse width,1% duty cycle  
2.Pulse test: pulse width≤40ms

THERMAL CHARACTERISTCS

Parameter	Symbol	SR30100CT-V	SRF30100CT-V	SR30100D1-V	Unit
Typical thermal resistance 3)	RθJC	2.0	4.5	2.0	°C/W

3.Thermal resistance from junction to case

AVAILABALE PACK INFORMATION

Product code	Pack	Box Size L×W×H(mm)	Quantity(pcs/box)	Carton SizeL×W×H(mm)	Quantity(box/carton)
SR30100CT-V-TO-220AB	P/T	558×148×38	1000	565×225×170	5
SRF30100CT-V-ITO-220AB	P/T	558×148×38	1000	565×225×170	5
SR30100D1-V-TO-263	P/T	558×148×38	1000	565×225×170	5

# SR30100CT-V,SRF30100CT-V,SR30100D1-V

FIG.1-FORWARD CURRENT DERATING CURVE

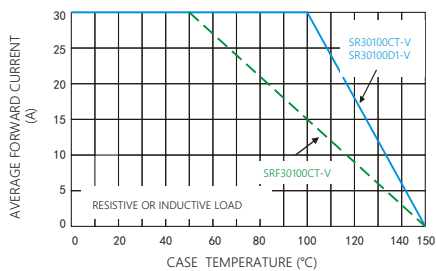


FIG.2-MAXIMUM NON-REPETITIVE PEAK FORWARD SURGE CURRENT

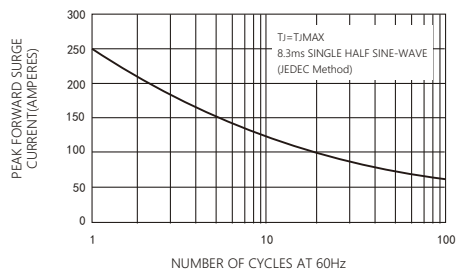


FIG.3-TYPICAL INSTANTANEOUS FORWARD CHARACTERISTICS

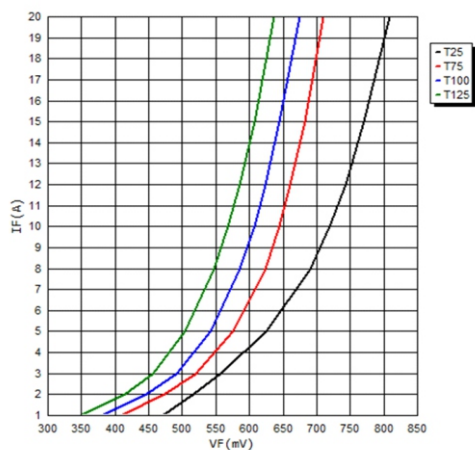


FIG.4-TYPICAL REVERSE CHARACTERISTICS

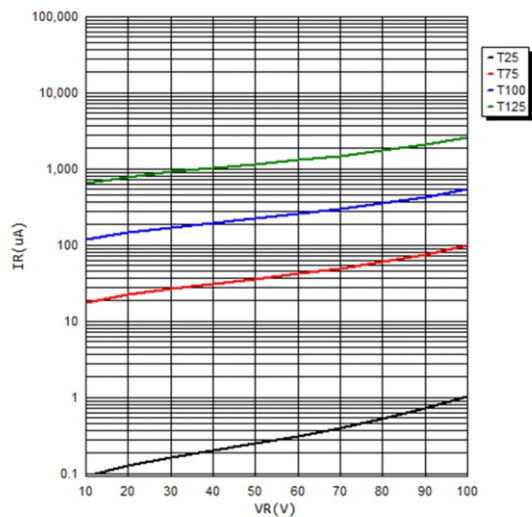
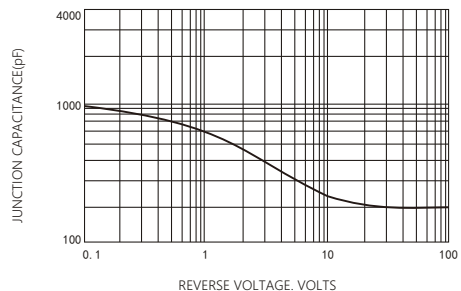


FIG.5-TYPICAL JUNCTION CAPACITANCE

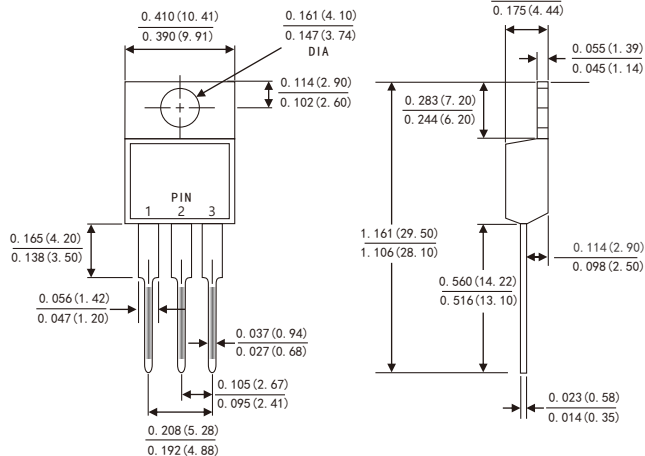
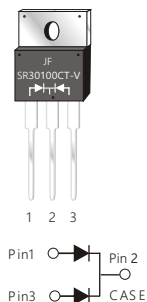


# SR30100CT-V,SRF30100CT-V,SR30100D1-V

## PACKAGE OUTLINE DIMENSIONS

### TO-220AB

SR30100CT-V

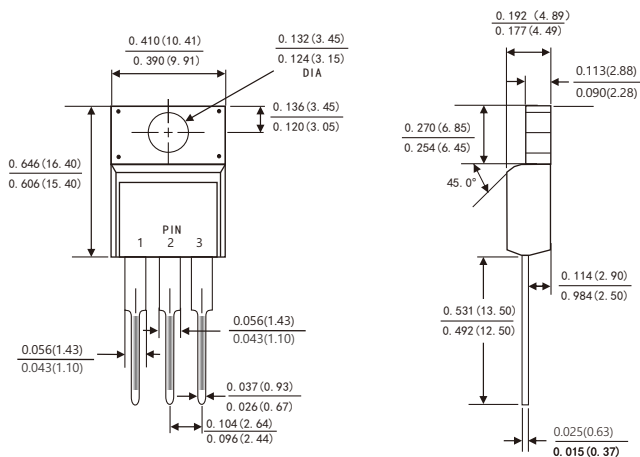
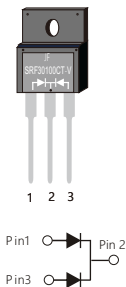


Dimensions in inches and (millimeters)

### ITO-220AB

### ITO-220AB

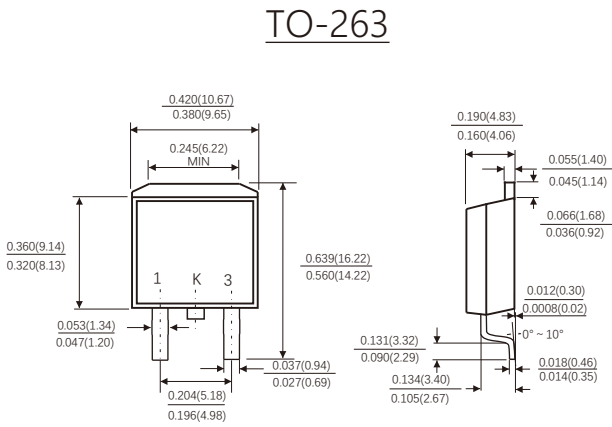
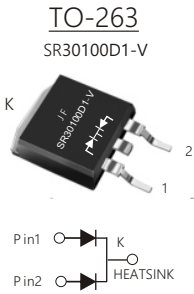
SRF30100CT-V



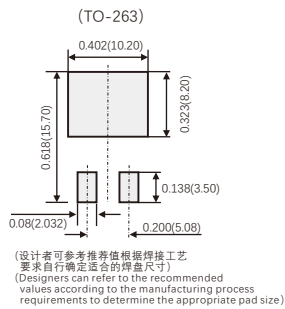
Dimensions in inches and (millimeters)

# SR30100CT-V,SRF30100CT-V,SR30100D1-V

## PACKAGE OUTLINE DIMENSIONS



## Suggested Pad Layout



## Friendship Reminder

■ JiNan JingHeng (hereinafter referred to as JH) reserves the right to make changes to this document and its products and specifications at anytime without notice.

■ Customers should obtain and confirm the latest product information and specifications before final design, purchase or use.

■ JH makes no warranty, representation or guarantee regarding the suitability of its products for any particular purpose, nor does JH assume any liability for application assistance or customer product design.

■ JH does not warrant or accept any liability with products which are purchased or used for any unintended or unauthorized application.

■ No license is granted by implication or otherwise under any intellectual property rights of JH.

■ JH's products are not authorized for use as critical components in life support devices or systems without express written approval of JH.