

GLASS PASSIVATED BRIDGE RECTIFIER

Reverse Voltage:1000Volts
Forward Current:3.0Amps

Features

- Plastic package has Underwriters Laboratory Flammability Classification 94V-0
- Glass passivated chip junction
- High surge forward current capability
- Ideal for automated placement
- Meets MSL level 1, per J-STD-020, LF maximum peak of 260 °C
- Component in accordance to RoHS 2015/863/EU

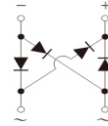
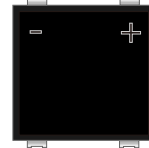
Mechanical data

- Case:JBF molded plastic body
- Terminals:Plated leads solderable per MIL-STD-750,method 2026
- Polarity:As marked
- Mounting Position:Any

APPLICATIONS

- Used in high frequency AC/DC bridge full wave rectification for SMPS, lighting ballaster, adapter, battery charger, home appliances, office equipment, and telecommunication applications.

JBF



Maximum Ratings And Electrical Characteristics

(Ratings at 25°C ambient temperature unless otherwise specified ,Single phase ,half wave ,resistive or inductive load. For capacitive load,derate by 20%.)

Parameters	Symbol	Value	Unit
Maximum repetitive peak reverse voltage	V_{RRM}	1000	V
Maximum average forward rectified current	$I_{F(AV)}$	3.0	A
Peak forward surge current 8.3ms single half sine-wave superimposed on rated load (JEDEC method,Total device)	I_{FSM}	120	A
Rating for fusing($t < 8.3ms$)	I^2t	59.7	A ² S
Operating junction temperature range	T_j	-55 to 150	°C
Storage temperature range	T_{stg}	-55 to 150	°C

RATINGS AND CHARACTERISTICS JBF310

Electrical Characteristics (Per diode, $T_A=25^\circ\text{C}$ Unless otherwise noted)

Parameter	Test Conditions		Symbol	Min.	Typ.	Max.	Unit
Breakdown voltage Blocking voltage	$I_R=10\mu\text{A}$		V_{BR} V_R	1050	–	–	V
Instaneous forward voltage	$T_J=25^\circ\text{C}$	$I_F=1.0\text{A}$	V_F ¹⁾	–	0.85	–	V
		$I_F=3.0\text{A}$		–	0.93	1.00	
	$T_J=125^\circ\text{C}$	$I_F=1.0\text{A}$		–	0.72	–	
		$I_F=3.0\text{A}$		–	0.81	0.87	
Reverse current	$T_J=25^\circ\text{C}$	$V_R=1000\text{V}$	I_R ²⁾	–	–	5	μA
	$T_J=125^\circ\text{C}$			–	–	250	
Junction capacitance	4V, 1MHz		C_J	–	36	–	pF

Notes: 1.Pulse test: 300 μs pulse width, 1% duty cycle

2.Pulse test: pulse width $\leq 40\text{ms}$

Thermal Characteristics

Parameter	Symbol	JBF	Unit
Typical thermal resistance ³⁾	$R_{\theta\text{JC}}$	5.0	$^\circ\text{C}/\text{W}$

3.Thermal resistance from per diode junction to case

RATINGS AND CHARACTERISTICS JBF310

Fig.1-Forward Current Derating Curve

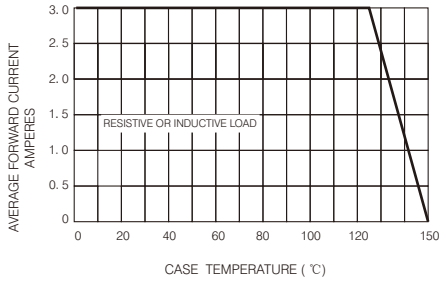


Fig.2-Maximum Non-repetitive Peak Forward Surge Current

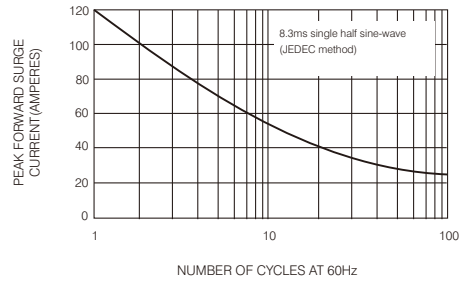


Fig.3-Typical Instantaneous Forward Characteristics

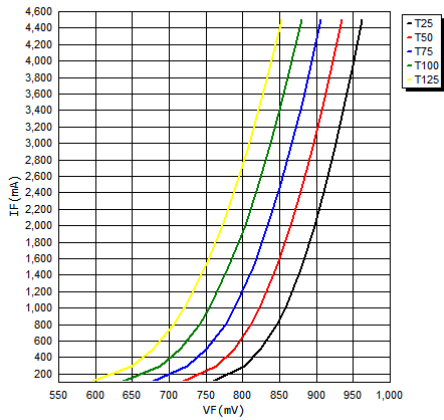
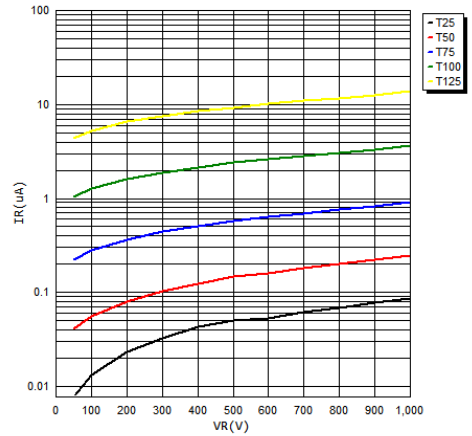
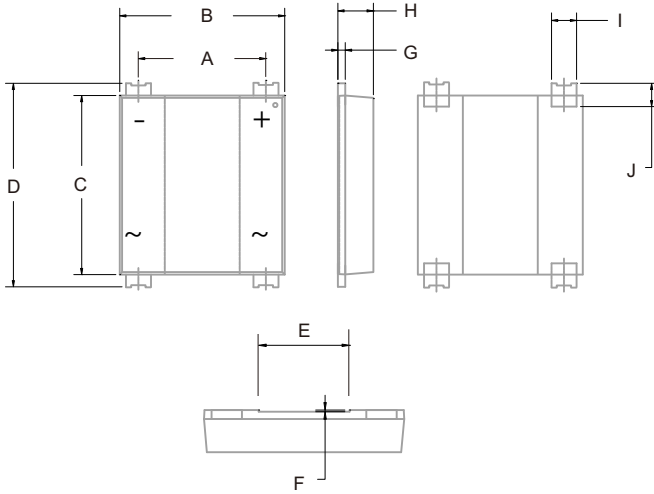


Fig.4-Typical Reverse Characteristics



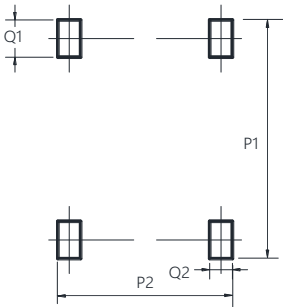
PACKAGE OUTLINE DIMENSIONS

JBF



UNIT:mm		
DIM	MIN	MAX
A	4.80	5.30
B	6.20	7.00
C	7.10	8.20
D	7.90	8.90
E	2.90	3.10
F	0.04	0.08
G	0.15	0.40
H	1.30	1.50
I	0.80	1.20
J	0.70	1.60

Suggested Pad layout



Dimensions in millimeters

Dim	Min
P1	9.15
P2	7.10
Q1	1.80
Q2	2.00

Friendship Reminder

- JiNan JingHeng(hereinafter referred to as JH) reserves the right to make changes to this document and its products and specifications at anytime without notice.
济南晶恒（以下简称JH）保留，未经通知变更本文件和与本文件相关的产品及规格的权利。
- Customers should obtain and confirm the latest product information and specifications before final design, purchase or use.
使用方应在使用、采购本产品之前获取并确认产品信息和规格书的最新版本。
- JH makes no warranty, representation or guarantee regarding the suitability of its products for any particular purpose, nor does JH assume any liability for application assistance or customer product design.
JH对其产品用于某特定用途的适用性，既不做任何保证、说明或担保、也不承担任何应用协助或使用方设计的法定责任。
- JH does not warrant or accept any liability with products which are purchased or used for any unintended or unauthorized application.
JH不保证或承担任何责任，其产品被采购使用于任何非预期或授权的应用。
- No license is granted by implication or otherwise under any intellectual property rights of JH.
此规格书属于JH的知识产权,没有经过我司授权不得抄袭。
- JH's products are not authorized for use as critical components in life support devices or systems without express written approval of JH.
没有JH的书面授权，JH的产品不能在生命支撑设备或系统里作为关键零件使用。